

GL Series Weathertight Nema 4 UltraSwitch™

Introduction:

The GL series UltraSwitch™ is designed to meet Nema 4 and 4X standards and is U.L. listed to nonincendive standards for Division 2. This position indicator features “quick-set” tool free adjustment cams for ease of position sensing adjustment. The GL comes standard with a Pharos™ position indicator or a flat top for a lower profile. Many switch options can be installed to meet each applications’ needs. Each integral switch is pre-wired to a multi-point terminal block. A minimum of two spare terminals are provided for external accessories to eliminate costly junction boxes. The switch includes two 1/2" NPT (optional third) conduit connections for easy wiring access.



Applications:

The GL enclosure is designed to meet your weathertight signaling needs. Many switch options are available to meet your electrical specifications. This watertight, position indicator will mount to any Rack and Pinion, Scotch Yoke, Vane, or other rotary actuator type.

The GL may be installed on any actuator conforming to the NAMUR standard for accessory mounting bolt pattern and pinion height without a coupler (see bulletin PS0037-CV). This reduces deadband and is less expensive. Automax also offers a full line of mounting hardware for non-NAMUR actuators.

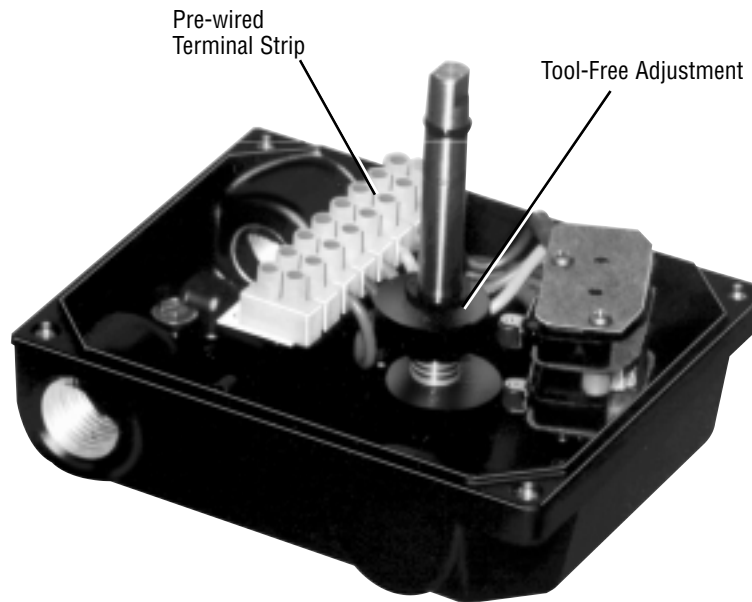
Durable construction and corrosion resistant materials/coatings provide protection against the toughest applications in all process industries including:

1. Chemical and Petro-Chemical
2. Power
3. Food and Beverage
4. Pharmaceutical
5. Municipal and Wastewater treatment

Flowserve Corporation
Flow Control Division
www.flowserve.com

1350 N. Mountain Springs Parkway
Springville, Utah 84663-3004
Phone: 801 489 8611

1978 Foreman Dr.
Cookeville, TN 38501
Phone: 931 432 4021

**Features:**

1. **Quick-Set Cams.** Tool free adjustment of switch trip point is accomplished simply by pushing or pulling the cam and rotating it to the new position. Cams are spring-loaded and splined to maintain switch setting in any installed position. They are fully adjustable through 360° in 4° increments.
2. **Corrosion Resistant Materials.** All exposed metallic surfaces are stainless steel. The GL switch housing is completely coated inside and out (except electrical connections) with polyester powder coat to permit use in wet and corrosive environments.
3. **Captive Cover Screws** permit calibration without potential for losing screws.
4. Optional **Pharos™ Visual Position Indicator** provides fully adjustable, high-contrast, full-angle viewing of valve position.
5. Numbered, pre-wired Multi-point **Terminal Strip** for easy hookup. Two spare terminals are provided with every switch to accommodate additional field devices, such as solenoid valves, to eliminate the cost of any additional junction boxes.
6. Each UltraSwitch™ enclosure includes a **Detailed Wiring Diagram** permanently attached inside the cover.
7. **Internal Grounding Screw** for ground wire hookup.

Flowserve Corporation
Flow Control Division
www.flowserve.com

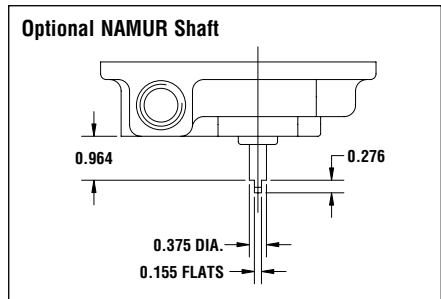
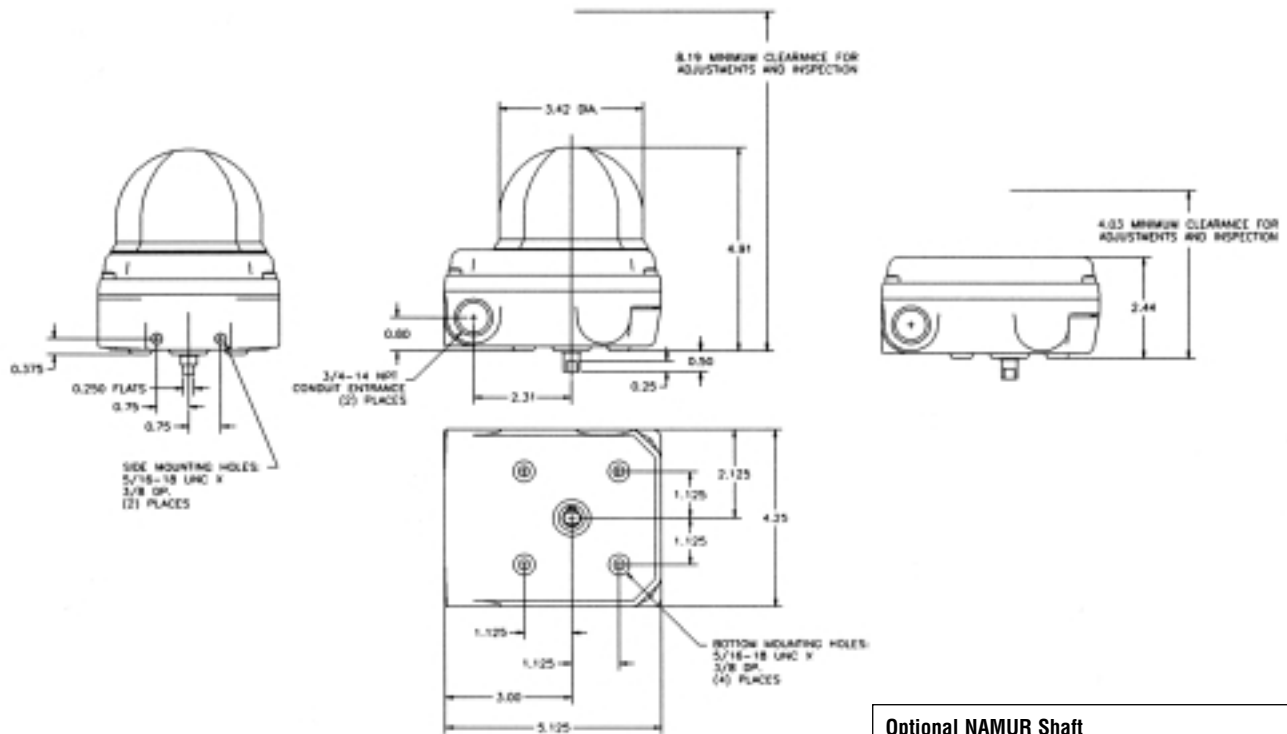
1350 N. Mountain Springs Parkway
Springville, Utah 84663-3004
Phone: 801 489 8611

1978 Foreman Dr.
Cookeville, TN 38501
Phone: 931 432 4021

Materials of Construction:

Part	Materials
Housing/Cover	Aluminum w/ Powder coat
Shaft	Stainless Steel
Cam	Nylon
Pharos Dome and Rotor	Polycarbonate
Terminal Block	Nylon - Buchanan TBS Series
Internal Brackets	Stainless Steel or Plated Carbon Steel
All Internal Fasteners	Stainless Steel or Plated Carbon Steel
All External Fasteners	Stainless Steel

Dimensions:



Flowserve Corporation
Flow Control Division
www.flowserve.com

1350 N. Mountain Springs Parkway
Springville, Utah 84663-3004
Phone: 801 489 8611

1978 Foreman Dr.
Cookeville, TN 38501
Phone: 931 432 4021

Principles of Operation:

The GL series UltraSwitch™ is designed for use with any industrial rotary actuator in weathertight applications. It indicates open and closed valve positions by completing electrical circuits to remote locations. Local visual indication is accomplished with the Pharos™ Rotary Indicator.

Hazardous Location Approvals:**Mechanical Switches****Types 1 and 3**

No hazardous location approval

Proximity Switches**Types 4, 5, 6, & all Phazer**

Class 1, Groups A, B, C & D,
Division 2 only

Note: When using hermetically sealed proximity switches, a conduit seal is not required (Division 2 only).

Temperature Range:

-40 to 180 Deg. F

-40 to 250 Deg. F: Consult Factory

Agency Listings:

U.L. File No. E122717

Representative:

382 Lancaster Avenue • PO Box 4006 • Malvern, PA 19355
Phone: 610-647-5700
Fax: 610-647-3905
E-mail: corp@tristatetechnical.com
Web: <http://www.tristatetechnicalsales.com>