

The function of a valve is shown by two figures. The first shows the number of ports, the second shows the number of valve positions (pilot ports do not count).

Example: 4/2 = 4 ports, 2 positions (open or closed),

The symbol for a valve has the same number of squares as the valve has positions.

Example: 2 positions =



Arrows in the squares show the flow direction of the fluid.

Examples: One flow path =



Two flow paths =



T-lines in the squares show the number of closed ports.

Example:



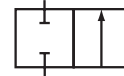
Two flow paths and one closed port =



In this catalog, the vast majority of valves listed have only two positions, in which the right-hand square shows the valve unoperated and the left-hand square shows the valve operated.

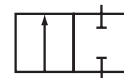
Normally Open (NO)

Example:



Normally Closed (NC)

Example:



Normally, the pipework is shown connected to the square representing the valve unoperated.

Symbols Showing Connections to Ports:

Exhaust that cannot be piped:



Exhaust that can be piped:

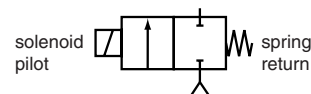


Connected to pressure source:



The methods of controlling the valve are shown as an addition to the squares. The left-hand side control shows the pilot (i.e., solenoid) and the right-hand side control shows the return pilot method (i.e., spring).

Example:



ISO Symbols for Valves Included in This Catalog.

| Ports/Positions | Function | Pilot | Return Pilot | Symbol |
|-----------------|----------|------------------------|--------------|--------|
| 2/2 | NC | Solenoid | Spring | |
| 2/2 | NC | Solenoid/Ext. Pressure | Spring | |
| 2/2 | NC | Solenoid/Int. Pressure | Spring | |
| 2/2 | NO | Solenoid | Spring | |
| 2/2 | NC | Ext. Pressure | Spring | |
| 2/2 | NO | Ext. Pressure | Spring | |
| 3/2 | NC | Solenoid | Spring | |
| 3/2 | NC | Solenoid/Int. Pressure | Spring | |
| 3/2 | NO | Solenoid | Spring | |
| 3/2 | NO | Solenoid/Ext. Pressure | Spring | |
| 3/2 | NO | Solenoid/Int. Pressure | Spring | |
| 3/2 | U | Solenoid | Spring | |
| 3/2 | NC | Ext. Pressure | Spring | |
| 3/2 | NO | Ext. Pressure | Spring | |
| 3/2 - (4/2) | NC | Solenoid/Int. Pressure | Spring | |
| 4/2 | | Solenoid | Spring | |
| 4/2 | | Solenoid/Int. Pressure | Spring | |

